



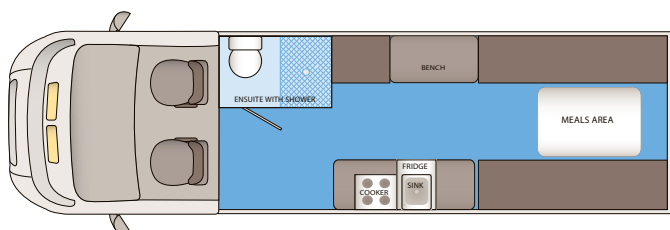
| EXTERNAL DIMENSIONS            |  |
|--------------------------------|--|
| Length (mm)                    | 6940 (22'9")                           |
| Width (mm) (excluding mirrors) | 1993 (6'6")                            |
| Height (mm)                    | 2955 (9'8")                            |
| GVM Weight (kg)                | 3550                                   |
| Tare Weight (kg)               | 3260                                   |
| Payload (kg)                   | 290                                    |
| INTERNAL DIMENSIONS            |  |
| Floorplan Length (mm)          | 4420 (14'6")                           |
| Floorplan Width (mm)           | 1750 (5'9")                            |
| Ceiling Height (mm)            | 1920 (6'4")                            |
| Main Bed (cm)                  | 190L x 170W                            |
| VEHICLE FEATURES               |  |
| Vehicle Type                   | Mercedes Sprinter                      |
| Engine                         | 2.2L Turbo Diesel                      |
| Cylinders                      | 4                                      |
| Maximum Power                  | 95 kW                                  |
| Maximum Torque                 | 305 Nm                                 |
| Transmission                   | 5 speed automatic                      |
| Fuel Tank                      | 75L                                    |
| Additional Features            | Air conditioned driving cabin          |
|                                | AM/FM radio with single disc CD player |
|                                | Remote central locking                 |
|                                | Power steering, windows & mirrors      |
|                                | Driver side air bag                    |

Note: Features, specifications and weights are subject to change without notice.

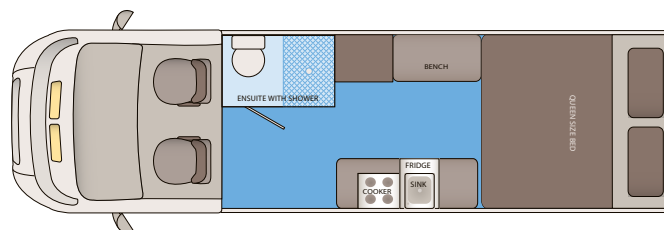
All used vehicles come with:

- Roadworthy certificate
- Gas certificate
- 12 month AWN Advantage Warranty Plan
- 1 month Talvor warranty (covers appliances & motorhome build)

| STANDARD EXTERNAL FEATURES   |
|--|
| Gas Cylinder 1x 4kg  |
| 86 Litres Fresh Water capacity                                     |
| 60 Litres Grey Water capacity                                      |
| Gas Hot Water System 22.6L   |
| House Battery 1x 95Ah Deep Cycle, Fully sealed                     |
| Battery Charger 20 Amp   |
| Water Filler (key lock)  |
| External 240 Volt Power Inlet                                      |
| DTV/AM/FM Antenna (powered)  |
| Roof Hatch to Living Area  |
| STANDARD INTERNAL FEATURES   |
| 2 Berth  |
| 80L Fridge/Freezer 12 Volt   |
| Microwave  |
| Stainless Steel Sink with hinged glass cover                       |
| 3x Gas Burner Cooktop with 12 Volt ignition and hinged glass cover |
| 12V Rangehood with light   |
| Reverse Cycle Air Conditioner                                      |
| 1x 19" LED TV with built-in DVD player                             |
| Curtains throughout  |
| Internal Lighting  |
| Fire Extinguisher & Smoke Alarm                                    |
| Full length mirror   |
| Cassette Toilet with swivel seat & 12 Volt electric flush          |
| Shower with hot & cold tapware                                     |
| Wardrobe with hanging space  |
| Aft North-South Dinette/Bed Conversion                             |
| Forward Ensuite (combined shower/toilet)                           |
| Mid Kitchen  |



DAY TIME



NIGHT TIME